

## CONSTRUCTION SCABBLER - TRIPLE HEAD - BACK HANDLE

**SC3**


**THE SC3 IS THE MOST POWERFUL TRIPLE HEAD SCABBLER FOR HEAVY DUTY APPLICATIONS.**

Available with the ergonomic back handle grip or the flat head with Trelawny Vibro-Lo<sup>TM</sup> side handle.

The new cap design and replaceable cylinder sleeve make servicing even simpler.

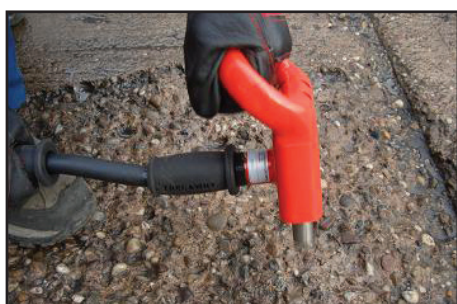
The optional TVS<sup>®</sup> vacuum shroud allows the connection of an industrial dust collector for collecting nuisance and hazardous dust.

### FEATURES & BENEFITS

- 3 Replaceable tough carbide tipped piston for fast production and long service life
- Ergonomic back handle for easy operation or optional Vibro-Lo<sup>TM</sup> model with a low vibration side handle
- Heavy duty cast body to suit the heaviest of applications

### APPLICATIONS

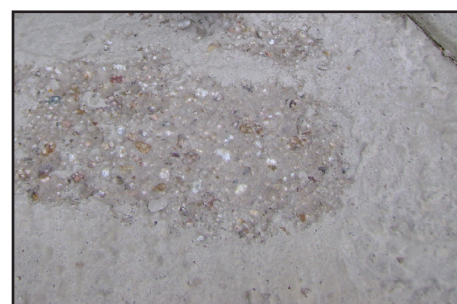
- Removal of laitance
- Roughening and exposing aggregate
- Preparing joints and cracks
- Removing existing coatings
- Reduction and levelling



**SCABBLING CONCRETE**



**ROUGHENING CONCRETE**









**TEXTURING CONCRETE**

# CONSTRUCTION SCABBLER - TRIPLE HEAD - BACK HANDLE

**SC3**

## KEY CONSUMABLES & ACCESSORIES

| Image  | Part Number | Description  |
|--|-------------|--|
|    | 612.6000    | <b>Single Piece Cruciform Piston</b><br>Flatter surface profile, ideal for fast reduction of material        |
|    | 612.6010    | <b>Single Piece Bush Piston</b><br>Rough pitted profile, ideal for application of fresh concrete or coatings |
|   | 815.5550    | <b>Whip Check</b>  |
|   | 859.1580    | <b>3/8" BSP inline lubricator</b>  |
|  | 421.3452    | <b>Whip Hose</b><br>Consists of air hose 3/8" BSP claw - 2m  |
|  | 458.1580    | <b>Whip Hose &amp; Oiler Assembly</b><br>Consists of whip hose, whip check and 3/8" lubricator               |

## TECHNICAL DATA

| Model  | Part Number | Weight (kg) | Width (mm) | Working Height (mm) | Blows per minute (BPM) | Air Consumption (lps - cfm) | Noise Level (db (A) ) | Vibration Level (Aeq m/s²) |
|--|-------------|-------------|------------|---------------------|------------------------|-----------------------------|-----------------------|----------------------------|
| Triple Scabbler Back Handle Bush Hammer Head | 153.6151    | 4.7         | 155        | 220                 | 2800 x 3               | 7.5 - 16                    | 98.5                  | 41.6                       |
| Triple Scabbler Back Handle Cruciform Head   | 153.6150    | 4.7         | 155        | 220                 | 2800 x 3               | 7.5 - 16                    | 98.5                  | 41.6                       |
| Triple Scabbler Flat Back Bush Hammer Head   | 153.6171    | 5.6         | 155        | 220                 | 2800 x 3               | 7.5 - 16                    | 98.5                  | <10                        |
| Triple Scabbler Flat Back Cruciform Head     | 153.6170    | 5.6         | 155        | 220                 | 2800 x 3               | 7.5 - 16                    | 98.5                  | <10                        |